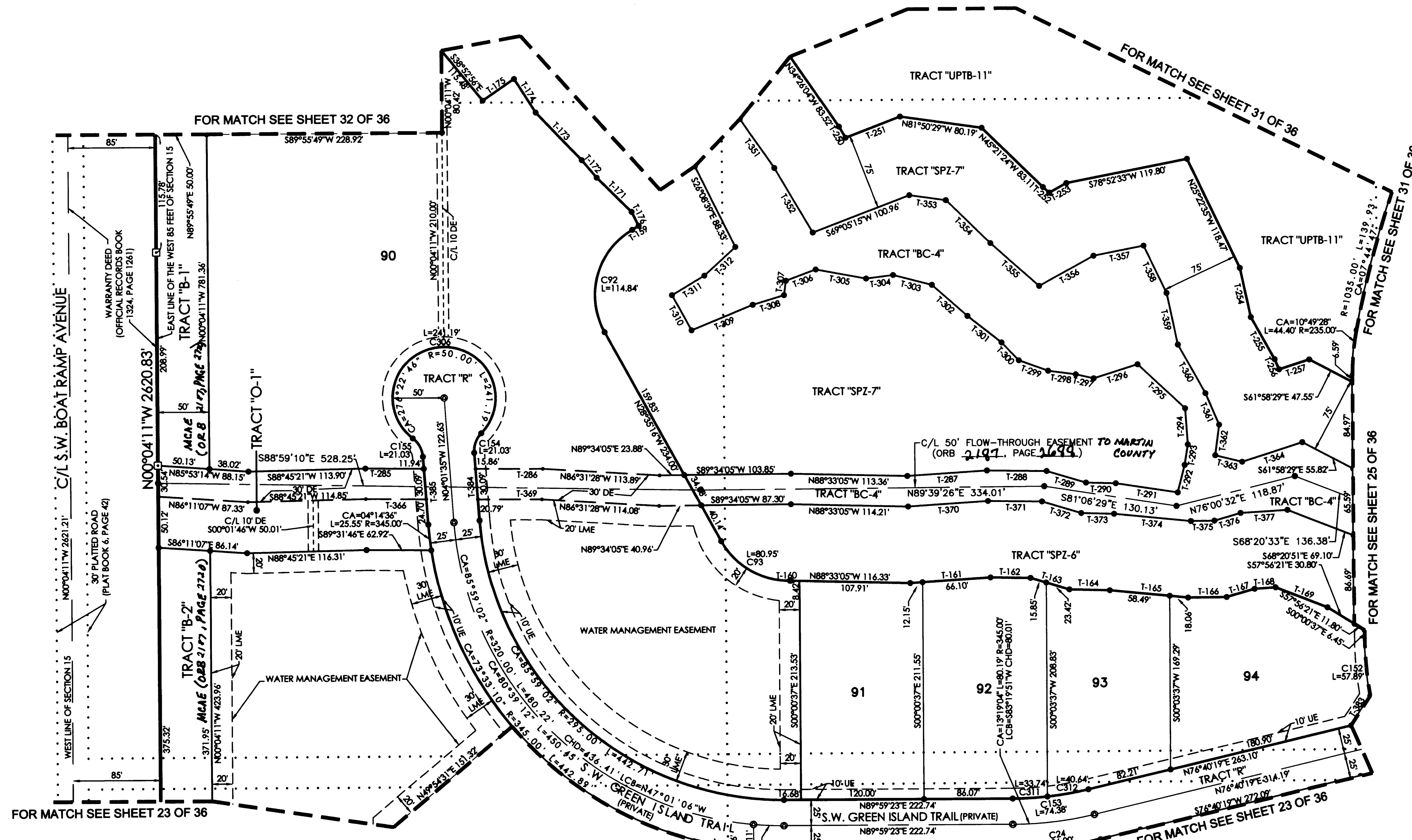


60 30 0 60
GRAPHIC SCALE IN FEET



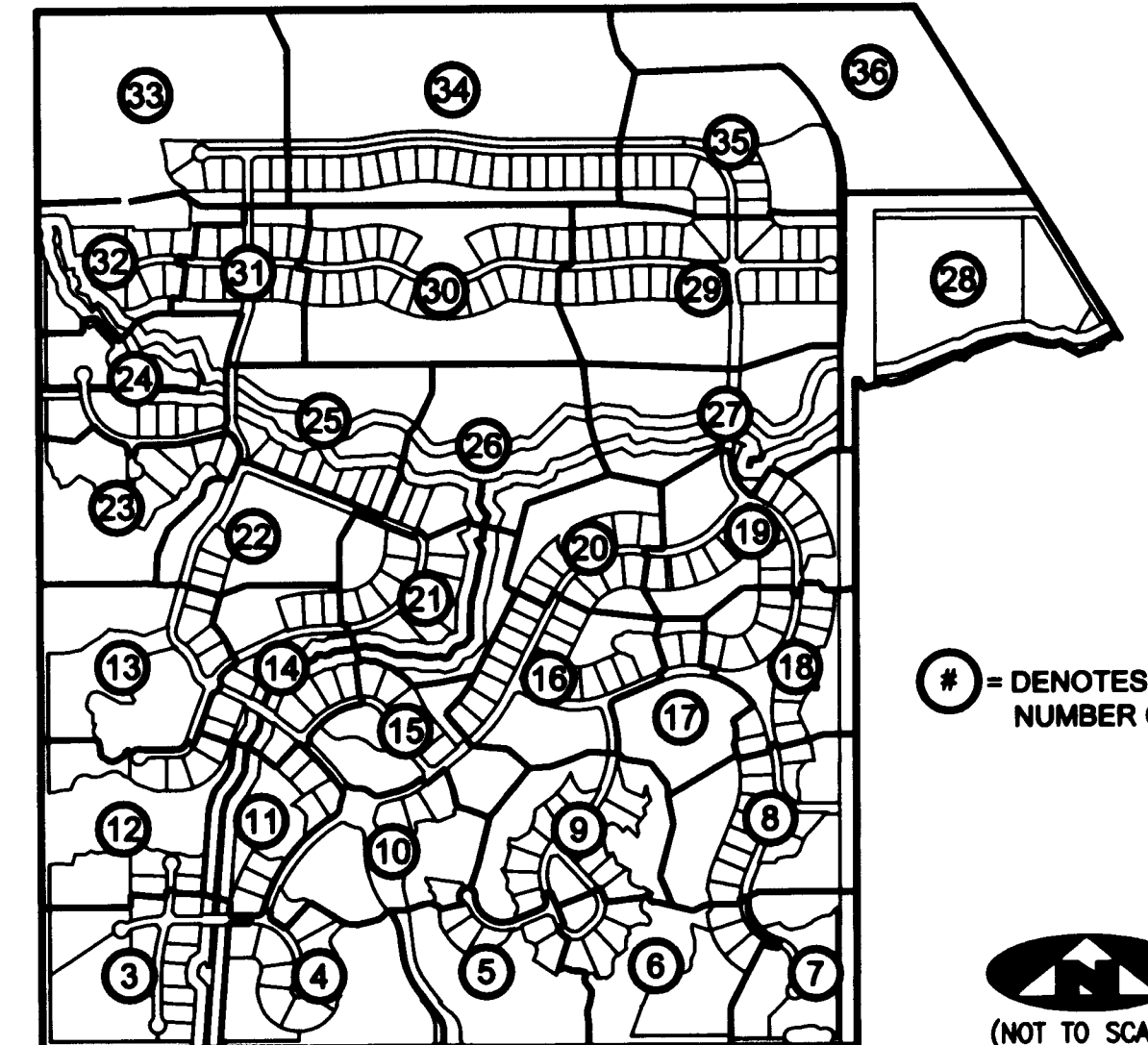
FOR MATCH SEE SHEET 31 OF 36

FOR MATCH SEE SHEET 23 OF 36

TANGENT TABLE

Table with 2 columns of bearings and distances for tangent lines. Includes entries like T-44 S00°07'02"E 66.35' and T-302 S48°13'33"E 45.80'.

SHEET INDEX



= DENOTES SHEET NUMBER OF 36



(NOT TO SCALE)

CURVE TABLE

Table with 4 columns: Curve ID, Curve Angle, Curve Length, and Chord Distance. Includes entries like C24 CA=13°19'04" R=370.00' L=86.00' and C92 CA=87°43'45" R=75.00' L=114.84'.

LEGEND

Legend table defining symbols for radial lines, centerlines, easements, monuments, and other survey features.

SURVEYOR'S NOTES

1. THE BASE BEARING, AS SHOWN HEREON, IS N89°58'48"W ALONG THE SOUTHWEST CORNER OF THE SOUTH-WEST QUARTER OF SECTION 15, TOWNSHIP 38 SOUTH, RANGE 40 EAST. 2. IN THOSE INSTANCES WHERE UTILITY OR DRAINAGE STRUCTURES ARE CONSTRUCTED IN CONFLICT WITH THE PLATTED PERMANENT CONTROL POINT POSITION STRADDLERS MONUMENTED AS PERMANENT CONTROL POINTS WILL BE SET TO REFERENCE THE PLATTED POSITION. 3. LINES THAT INTERSECT CURVES ARE RADIAL UNLESS OTHERWISE NOTED. 4. THIS INSTRUMENT WAS PREPARED BY WM. R. VAN CAMPEN, PROFESSIONAL SURVEYOR AND MAPPER NO. 2424, IN AND FOR THE OFFICES OF ASSOCIATED LAND SURVEYORS, INC., 4152 WEST BLUE HERON BOULEVARD, SUITE 121, RIVIERA BEACH, FLORIDA, 33404



ASSOCIATED LAND SURVEYORS, INC.
4152 W. BLUE HERON BOULEVARD-SUITE 121
RIVIERA BEACH FLORIDA 33404 LB 7344
PHONE: (561) 848-2102 FAX: (561) 844-9659 EMAIL: ALSURVEY@AOL.COM

Table with 2 columns: File name (P260PLAT) and other project details like FB, WO, NO., DATE, DWN, and SHEET number.